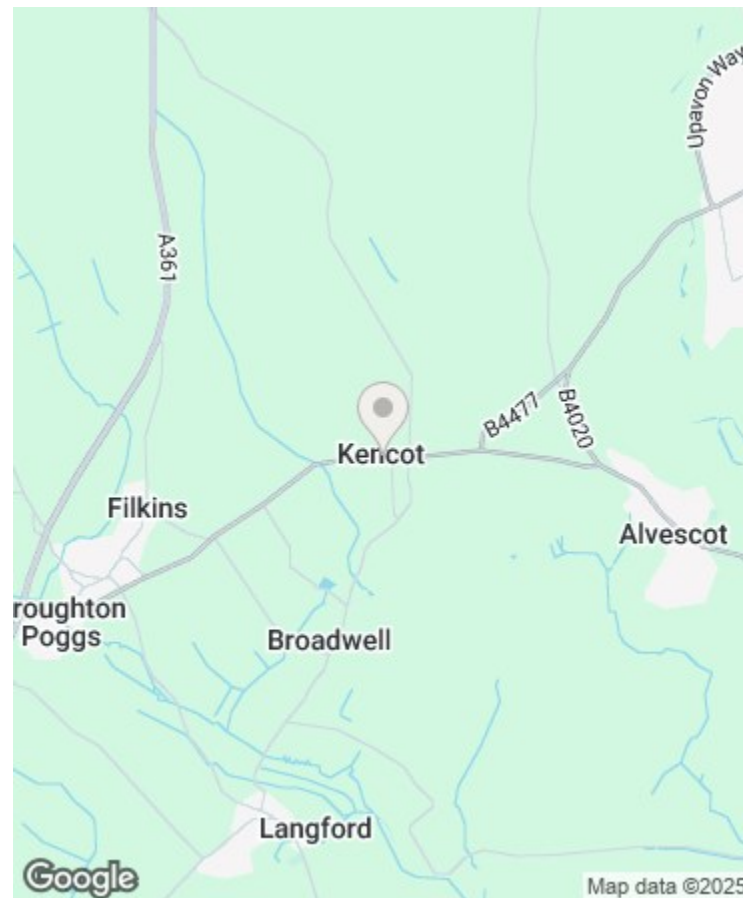




THE COTSWOLD LETTING AGENCY

BETTER BY FAR



Directions

Viewings

Viewings by arrangement only. Call 01993 684572 to make an appointment.

EPC Rating

E

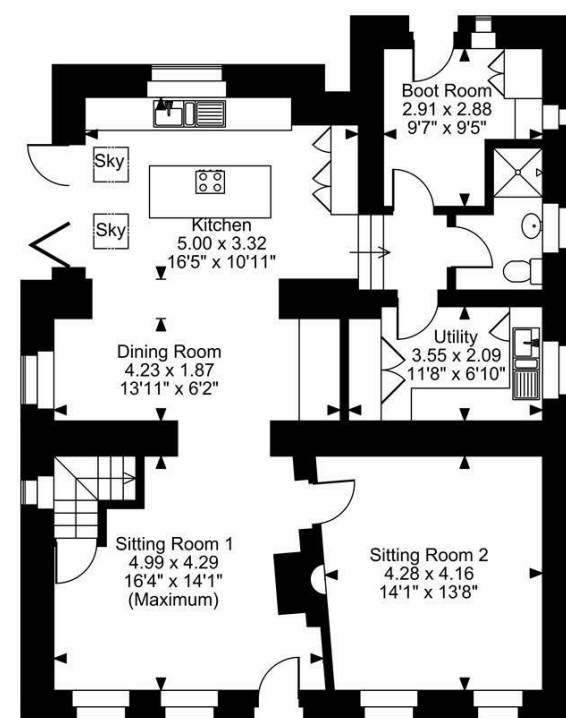
Energy Efficiency Rating		
	Current	Potential
Very energy efficient - lower running costs		
(92 plus) A		
(81-91) B		
(69-80) C		
(55-68) D		
(39-54) E	45	79
(21-38) F		
(1-20) G		
Not energy efficient - higher running costs		
England & Wales		
EU Directive 2002/91/EC		



The Cottage Kencot, GL7 3QX

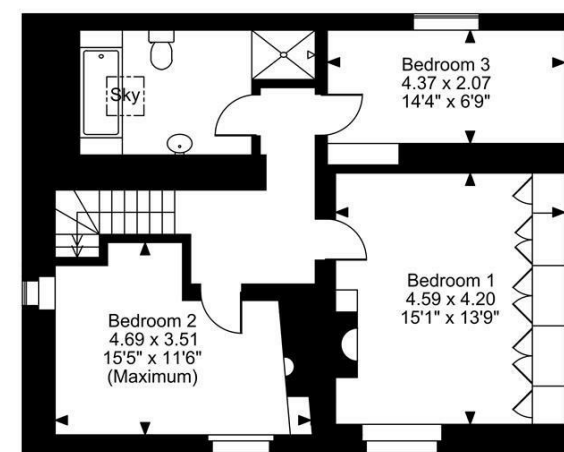
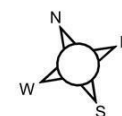
£3,500 Per Month

- 3 bedroom family home
- Furnished
- Beautiful landscaped garden
- Short let
- Heart of the Cotswolds



Ground Floor

The Cottage, Kencot, Lechlade
Approximate Gross Internal Area
1736 Sq Ft/161 Sq M



First Floor

FOR ILLUSTRATIVE PURPOSES ONLY - NOT TO SCALE

The position & size of doors, windows, appliances and other features are approximate only.
© ehouse. Unauthorised reproduction prohibited. Drawing ref. dig/8631746/DMS

The Cottage , Kencot GL7 3QX

Kencot, a charming village nestled within the Cotswolds, is conveniently located about 10 miles south of Oxford and 20 miles west of Banbury. Surrounded by picturesque rolling hills and idyllic farmland, it offers a tranquil escape for visitors seeking a peaceful getaway. There are several charming pubs within easy reach. The Fleece Inn in Bourton-on-the-Water, the Plough Inn in Lower Slaughter, and the Swan Inn in Asthall, all within a 2-3 mile radius, provide a traditional pub experience with a welcoming atmosphere, a good selection of beers, and delicious food.

This exquisite 3-bedroom Cotswold stone cottage is located in the village of Kencot. The property has recently undergone a tasteful refurbishment, resulting in a stunning interior. The property boasts a beautiful kitchen with a large island, perfect for culinary enthusiasts. The upper floor provides three great sized bedrooms and a bright family bathroom.

The landscaped garden offers a serene outdoor space, while an additional office space in the garden provides a tranquil workspace. Furnished to a high standard, this charming cottage is available for short-term lets, making it an ideal choice for those seeking a luxurious and comfortable stay in the heart of the Cotswolds.

Contact agency for details about bills.



Council Tax Band:

